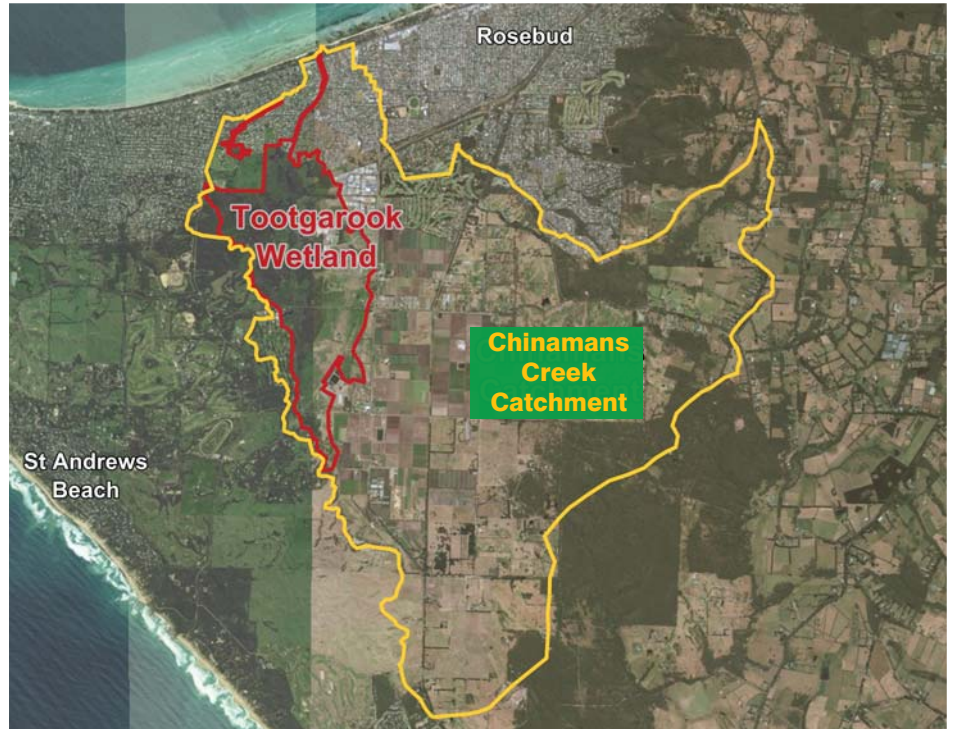


Planning together, for the future of the Tootgarook Wetland

The Tootgarook Wetland

The Tootgarook Wetland in Rosebud West, is a groundwater dependent coastal freshwater wetland, located within the greater Chinamans Creek Catchment with features of international environmental significance.

The Mornington Peninsula Shire is completing the Tootgarook Wetland Management Plan to identify and carry out actions with Government, Community and Landholders, that are required to protect, enhance and where identified restore the Catchment to ensure that the Wetland retains its beauty and function.



Why Tootgarook Wetland is important

- History of the Wetland existing for over 10,000 years
- Culturally and spiritually important to local indigenous people
- Cleans the water quality in Port Phillip Bay, by filtering the pollution (sediments and nutrients from upstream)
- Protects Rosebud from flooding, as the Wetland acts like a sponge to absorb storm and flood waters
- Stores water in the ground, to slowly release, for plants, crops and animals; especially during droughts and severe heat
- Collects the rain, to help the soil build up, that is used for local farming, since the 1830s
- Hills, dunes and sandy areas are home to rare plants (flora) and animals (fauna)
- Indigenous flora species are found here, that no longer occur on other parts of the Mornington Peninsula
- Home to more than 120 different bird species, which include some that are endangered or threatened
- Many birds are migratory and travel thousands of kilometres, for the local food they eat, when they breed new generations of birds
- A place where people can enjoy the outdoors and learn the special characteristics of the Wetland
- A gathering place and focus for community, sports and recreation groups

What is in the Tootgarook Wetland Management Plan?

The Tootgarook Wetland Management Plan (**the Plan**) will identify and describe the management objectives (aims, purpose, goals and ideas) for the Wetland, including Chinamans Creek Catchment. The Plan will include timeframes and actions, that groups will work towards achieving.

To ensure that the management objectives are met, all the environmental, economic, social and cultural values and threats associated with the Wetland will be identified and assessed.



An endangered Australasian Bittern at the Tootgarook Wetland. Image courtesy of Friends of Tootgarook Wetlands Reserve.

Using these values and threats, a set of management actions will then be developed, to help achieve the management objectives to be met.

BMT WBM Pty Ltd, and Wetland Care Australia, in consultation with Mornington Peninsula Shire, and along with the committees of 'Government and Agency', and 'Stakeholder Advisory', as a collective group, will develop the initial draft Plan for public exhibition.

In the short-term, you can provide your input into the development of the Plan via your choice of contact with us, detailed on the following page.

**HAVE
YOUR
SAY**

Objectives of the Plan

The main objectives of the plan include:

- Facilitate the involvement of stakeholders and interested parties needed for the protection of the Wetland such as: local residents, businesses, land managers, community groups, and relevant Government departments and public Agencies.
- Promote a greater understanding of the values and benefits of managing the Wetland and greater catchment.
- Provide direction and assistance to stakeholders, to ensure appropriate decision making, investment and coordinated long-term conservation, land use and development, occurs in the greater catchment area.
- Provide a timeline and plan for the progress and review periods of specific management actions, for community groups, local government, and all other stakeholders to refer to.



Aerial view of Tootgarook Wetland during flood. Image courtesy of Friends of Tootgarook Wetland Reserve.

Why we need your input

In order to ensure that the actions contained the Plan can be successfully assigned and implemented, a common understanding between all interested stakeholders including: land owners, businesses, site managers, community groups, local schools, sporting clubs, Government departments and public Agencies is required.

Your input will:

- Help establish a common set of objectives for the long term management of the Tootgarook Wetland
- Identify any factors that affect, or may affect the Tootgarook Wetland and Chinamans Creek Catchment
- Ensure that management actions are appropriate and able to be implemented in a realistic timeframe
- Identify roles and responsibilities that involve all interested stakeholders including; land owners, businesses, site managers, community groups, local schools, sporting clubs, Government departments and public Agencies
- Increase understanding of the significance of the Tootgarook Wetland in the local region

How will the Plan affect you?

The Plan will identify and recommend a series of actions and monitoring programs that will enable the management objectives to be achieved.

These actions can be wide ranging including: community education, conservation programs, rehabilitation works and planning scheme amendments.

The management actions may influence residential, business, industrial, agricultural or recreational activities in and around the Wetland.



Image courtesy of Friends of Tootgarook Wetland Reserves

To help us to understand how you interact with the Wetland, now and into the future, we would like to discuss any potential for the Plan to impact your activities.

Your involvement in the development and progress of the Tootgarook Wetland Management Plan is vital and most welcomed.

Have your say:

- Contact WetlandCare on **1800 816 147** or email tootgarook@wetlandcare.com.au
- Request to become part of the Tootgarook Wetland Management Plan. Email your details to: tootgarook@wetlandcare.com.au
- Participate in the community consultation activities, from phone calls, meetings, or Wetland events, to be held in the coming months and throughout the course of the Plan development.

Follow the progress of the Plan:

On Social media - [facebook.com/wetlandcare](https://www.facebook.com/wetlandcare) and twitter.com/wetlandcare

Search for: **Tootgarook Wetland** on Council's website at www.mornpen.vic.gov.au or call Council on: **1300 850 600**

Note: Please use the hashtag **#TWMP15** on your Facebook, Twitter, and Instagram posts and photos.

This will help us keep up-to-date on our information and share your photos.